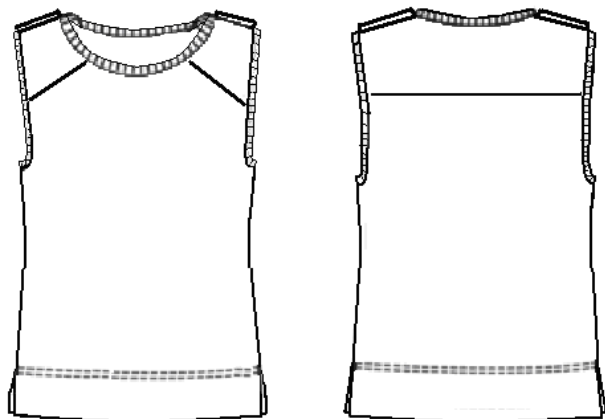


T-Shirt with Shoulder Yoke

This style has:

- Shoulder yokes on the front and back
- Shoulder flap
- Neck and sleeve ribbing
- 7cm long vents at the hem



Fit information

- The finished length from waist to bottom edge of T-shirt is approx. 15cm and can be adjusted if preferred.

Fabric recommendations



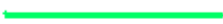

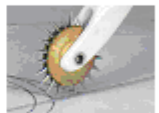
Only knitted fabrics!

- Jersey
- Elastane/wool knits

Tip: The neck ribbing may be cut from ribbing instead of shirt fabric.

Style variant

From T-shirt to shirt with yoke, shoulder flaps and vents
(Pattern from the My Label Fashionshow)

Legende		
Blue lines 	Red lines 	Green lines 
New cutting line	 Cut pattern pieces apart	 Copy pattern piece

Select model

Open My Label software and open or re-create the desired model in the Model Drawer.

Select style

- In the Style Drawer, under the heading 'Shirts', select the T-shirt.
- Increase the neckline to a max. measurement of 47cm.
- The sleeves are not required.
- The ribbing pattern pieces for the armhole are added later by hand.
Length = armhole width minus 2cm plus 1.6cm seam allowance
Width = neck ribbing width plus 1.6cm seam allowance.

Please note: The use of vents reduces the total length of the shirt by 7cm. If this is not desired, then increase the *Finished Length* in the Style Properties in advance.

Stitch variant on your computer using stitch placement .

Detailed instructions can be found in the Appendix.

1. Back yoke

Start off by determining the width of the back yoke by drawing a horizontal line. This should lie in the approximate middle of the armhole, but can be higher or lower if preferred.

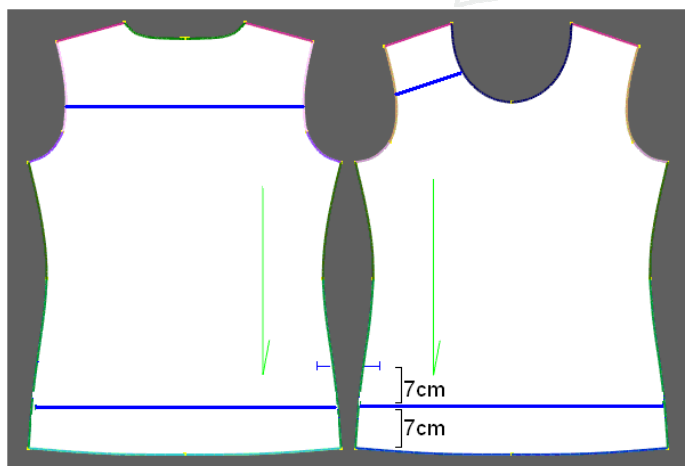
2. Front yoke

Draw slightly diagonal lines (parallel to the shoulder) from the neck edge to the armhole. Since the pattern pieces are cut out to the fabric fold, the markings need only be drawn on one shoulder.

3. Marking hem and top of vent

Draw the new hemline about 7cm above the existing hem edge and add the vent markings at double height (14cm).

Please note: After printing the pattern pieces, check these lines and markings and correct if necessary.



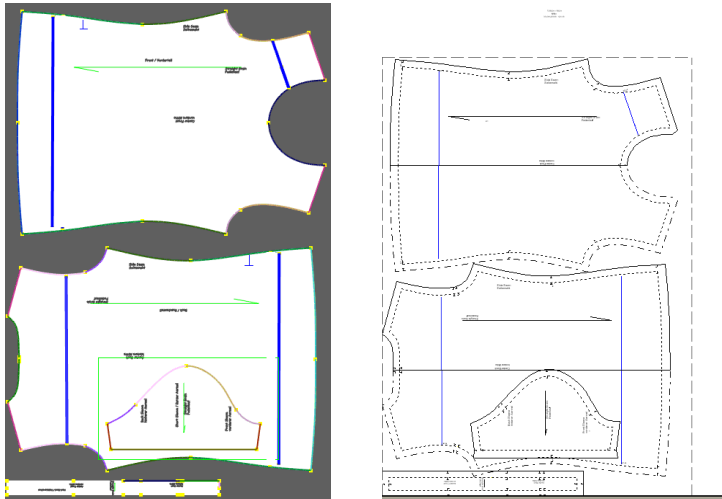
3D FASHION PATTERN SOFTWARE

Print out pattern pieces

Cut out only the front and back sections and the neck ribbing. Position and print these out. When positioning the pattern pieces, select short sleeves and place onto one half of the front or back in order to reduce paper use.

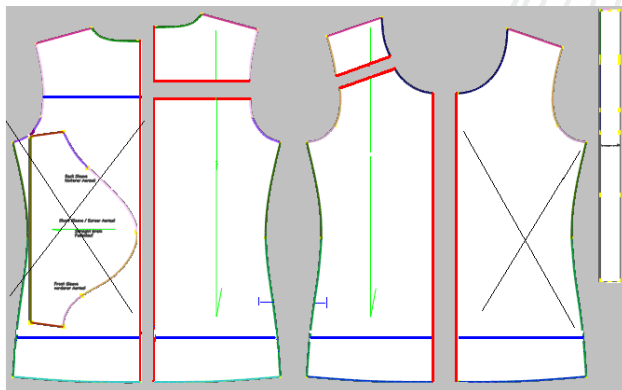
After printing, check the added lines. These must be the same on the front and the back.

Lengthen the grain on the front and back via the yoke.



Cut out pattern pieces and make alterations by hand.

Print out the pattern pieces, and then cut out the centre front and centre back. Then cut out the yoke.



Pattern pieces for sleeve ribbing

Measure armhole on paper pattern (without seam allowance).

Cut the pattern pieces with the following measurements.

Width = neck ribbing width plus 1.6cm seam allowance.

Length = armhole width minus 2-3cm plus 1.6cm seam allowance

Pattern piece for shoulder flaps

Cut the pattern piece with the following measurements.

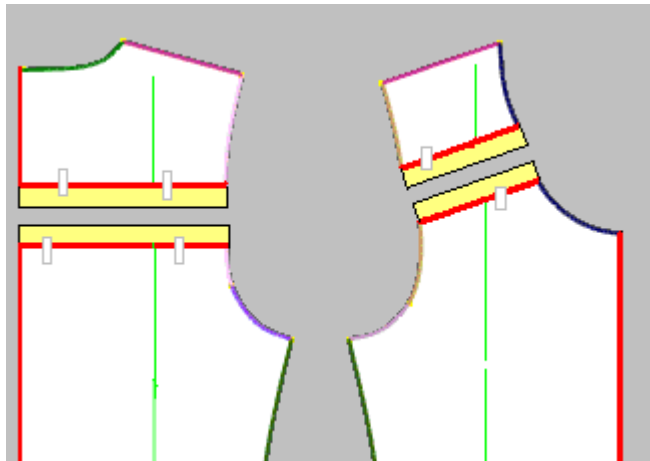
Width = 5cm plus 1.6cm seam allowance

Length = shoulder length plus 1.6cm seam allowance






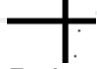

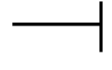
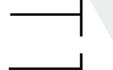
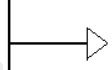


Before cutting, check the fit of the redesigned front and back sections.

Add seam allowance:

- Add a 1.6cm seam allowance to the front and back yoke
- Add a 1.6cm seam allowance to the front and back sections
- Suggestion: Add or increase cross-markings.
- Suggestion: Rename pattern pieces.

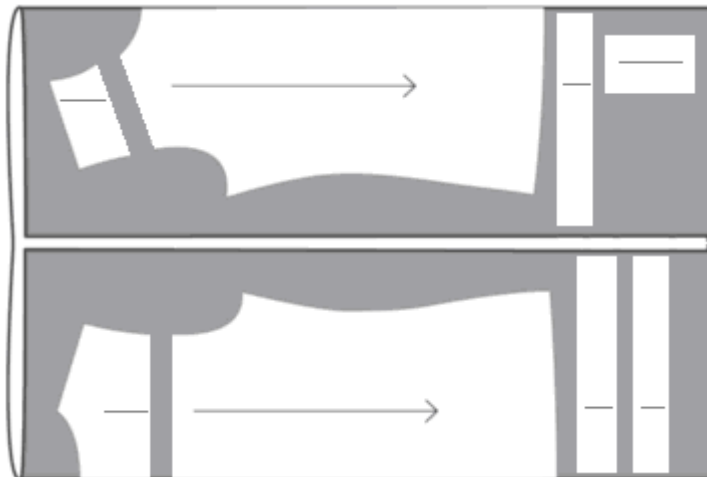


Fabric requirement

Fabric key				
				
Fabric, right side	Fabric, wrong side	Lining, right side	Lining, wrong side	Interfacing
Symbols and Markings Key				
CF Centre Front	CB Centre Back	B9 Sheet Numbering	 Reference points – help in combining the individual sheets	 grain
 Marking points on front sections	 Marking points on back sections	 Pleating in direction of arrow	 Marking of dart ends (1cm before the dart tip in each case)	 Button marking

The figure shows one way to lay out the pattern pieces on a folded length of fabric. Since the pattern pieces are created according to your own measurements and personal preferences, they may differ in size and shape from the pattern layout.

Fabric 140cm wide



Materials and miscellaneous

- Shoulder tape
- Double needle for the hem.

Cutting out

- 1 x front to fold
- 2 x front yoke
- 1 x back to fold
- 1 x centre back yoke to fold
- 2 x shoulder flaps lengthwise
- 1 x neck ribbing
- 2 x armhole ribbing

Preparation

Lay out paper pattern pieces on fabric as per the cutting-layout illustration. Transfer all markings to the fabric after the pieces have been cut out.

Please note:

Since only fabrics with a lot of stretch are suitable for this style; all seams should be sewn with an overlocker.

- **Tip:** Should you have neither an overlocker nor an overlock stitch on your sewing machine, select a narrow, elastic zig-zag stitch. Stabilise the shoulder seams with shoulder tape.

Sewing instructions

Yoke and shoulder seam

With right sides facing, sew the back yoke to the back section according to the markings.

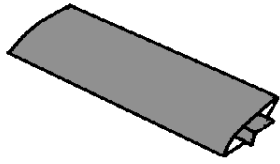
With right sides facing, sew the front yoke to the front section according to the markings. Iron seam allowances towards the yoke. Use edge-stitching if preferred.

Lay out shoulder seams with right sides facing and sew together.

Shoulder flap

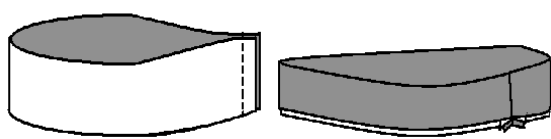
Sew together the strips of fabric lengthwise with right sides facing; iron seam apart and turn.

The seam line should lie in the middle of the underside of the flap. Press.



Neck and sleeve ribbing

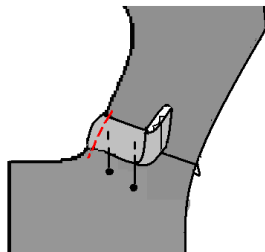
Sew together the neck and sleeve ribbing at the narrow sides in each case. Trim the seams to 0.5cm and press apart. Fold centred together lengthwise (wrong side of fabric is now inside) and press.



Position shoulder flap onto T-shirt

Position the seam line of the flaps onto the shoulder seams.

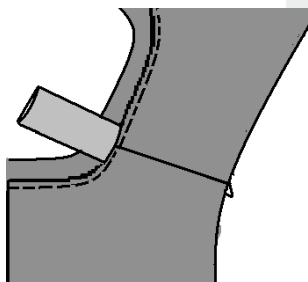
Pin and baste in place to the seam allowance of the neckline.



Sew on neck ribbing

For better results, the seam allowances of the neckline and the neck ribbing can be cut to 1cm.

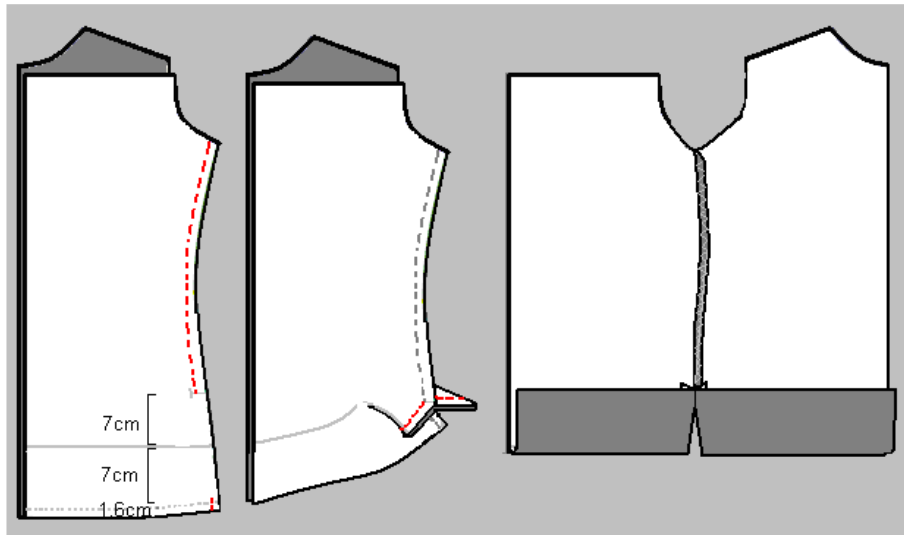
Divide the neck ribbing and the neckline of the T-shirt into four and mark with pins or with basting thread. Pin or baste the ribbing, beginning at centre back, according to the markings to the neckline. Sew in the neck ribbing; it must be stretched a little. Iron the seam allowance towards the T-shirt and edge-stitch from the right side. Take care not to include the shoulder flaps in the edge-stitching.



Side seams and vent

First iron the 7cm wide hem on the front and back section to mark it. Then straightstitch the side seam with right sides facing above and below the vent markings. Neaten the side seam up to the vent marking with the overlocker.

Now fold the hem into half at the open side seams. Fold vent seam allowances to wrong side, topstitch and press. (See figure below).



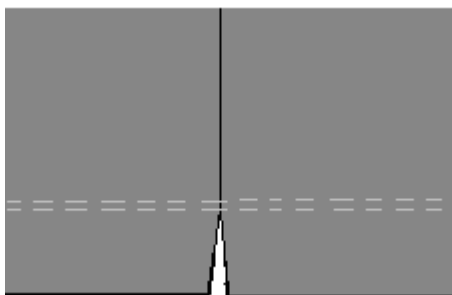
Work armhole

Baste the shoulder flaps onto the seam allowance of the armholes.

Divide the sleeve ribbing and the neckline into four and mark with pins or with basting thread. Pin or baste the ribbing to the armhole, beginning at the side seam and according to the markings. Sew in the arm ribbing; it must be stretched a little here. Iron the seam allowance towards the T-shirt and edge-stitch onto the T-shirt. The topstitching begins and ends underneath the shoulder flap so that it can be moved to the side and thus is not sewn over.

Sew hem

Sew the hem with a coverstitch machine or a double needle. Carefully cut back any remaining seam allowance.



You will find further detailed information in your My Label program under *Help > Sewing techniques*. This option offers detailed instructions on how to sew belt loops, collars, pockets, linings (and much more) properly. In addition, the basics of sewing techniques for beginners are explained.