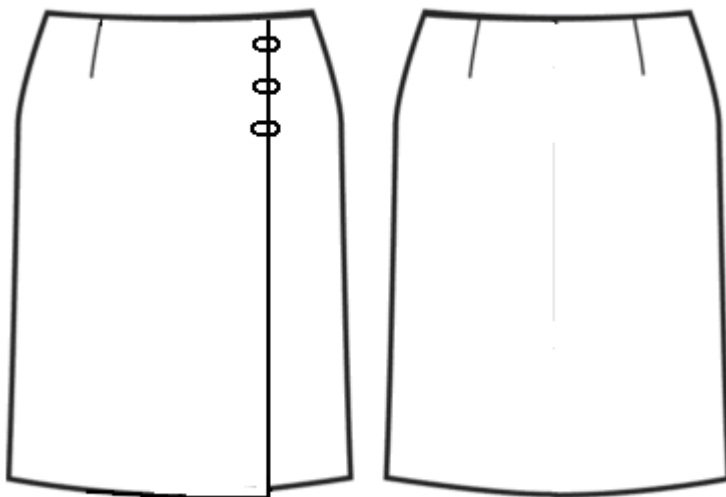


## Wraparound Skirt

This close-fitting skirt has:

- Darts on the front and back
- A closure over the front
- Waist facing



### Fit information

This skirt is meant to sit on the waist.

- The knee-length skirt has a finished length of 50 cm from the waist. The length can be adjusted according to preference.
- The waist corresponds to that of standard sizes, but can be adjusted to your own measurements (taken at the preferred waist height)

### Fabric recommendations

- Light jeans fabric, twill, suit fabric, trouser fabric
- Light woollen fabric or wool blends
- Cotton or polyester fabric and blends
- Napped viscose, georgette
- Viscose, Tencel®, fibre blends
- Ultrasuede®, leather, moleskin (dense cotton fabric)



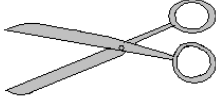

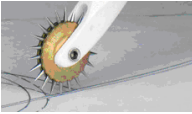
My Label™

3D FASHION PATTERN SOFTWARE

## Style Variant

From classic skirt to wraparound skirt

Style is constructed without a slit in the back.

Key					
Blue lines	New cutting line	Red lines	Cut pattern pieces apart	Green lines	Use wheel to copy pattern piece
					

### Select model

Open the My Label software and open or recreate the desired model in the Model Drawer.

### Select style

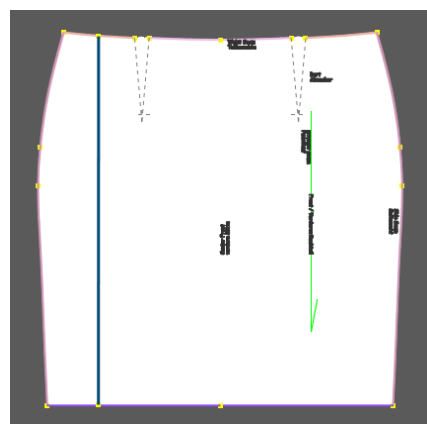
In the Style Drawer, under the 'Skirts' tab, select 'Classic Skirt'.

### Stitch variant by means of stitch placement

Precise instructions for this can be found in the Appendix.

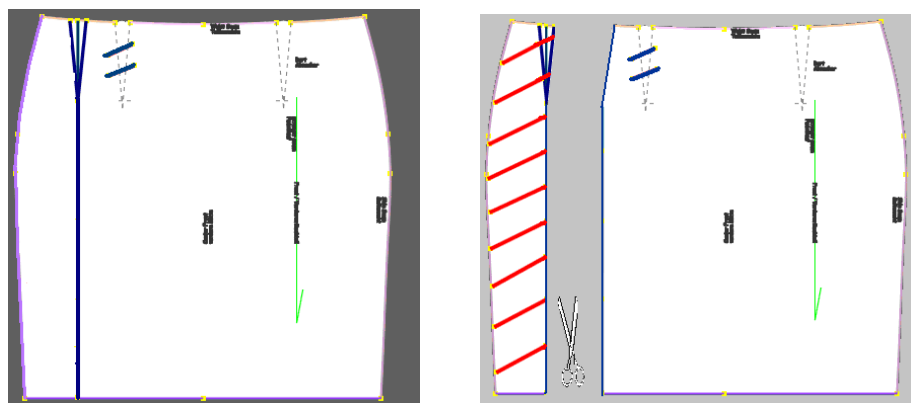
#### 1. Draw a new cutting line on the front

Place a straight line from the waist to just short of the hem on the left-hand side of the pattern, between side seam and dart. Enlarge pattern piece and draw stitch line in waist and hem up to the pattern edge.



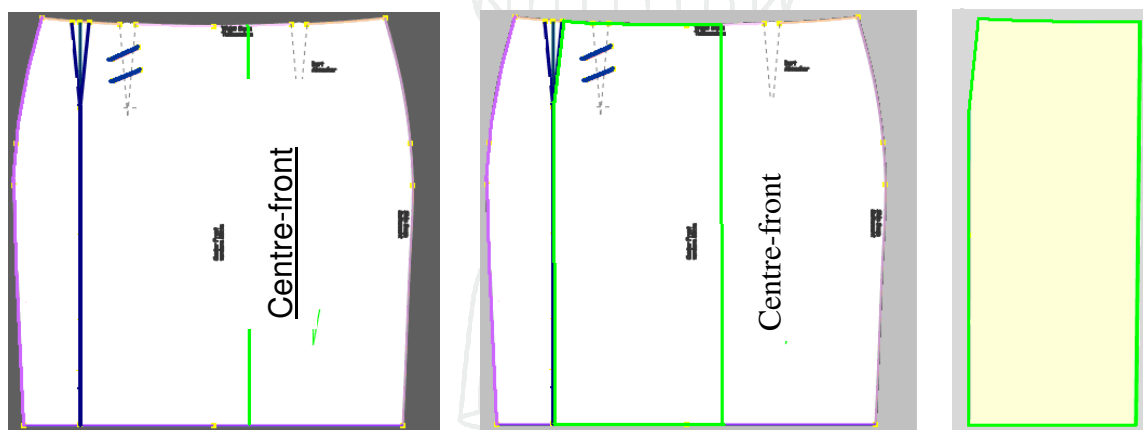
## 2. Reposition dart.

Move dart depth and width onto the new cutting line via stitch placement. After printing out the pattern pieces, the red-dashed area (incl. dart) is cut off of the front section.



## 3. Create new pattern piece (front edge facing)

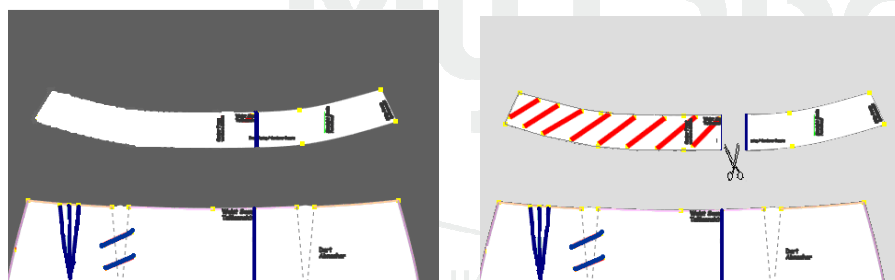
The new facing join-line should be placed approx 5 cm in front of the centre-front. This front edge facing for the front section is copied with tissue paper or film after printing out the pattern pieces.



## 4. Adjust waist facing to skirt section

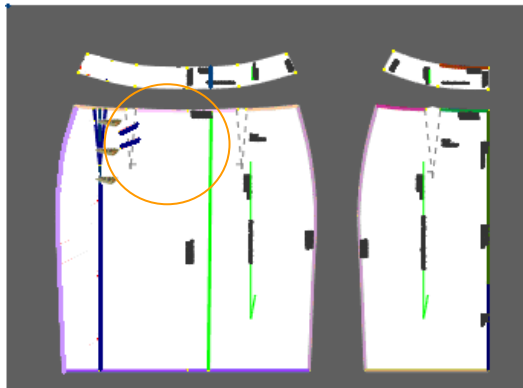
Place waist facing above front section. Draw new cutting line.

The shortened front waist facing is cut off from the original waistband facing after printing out the pattern pieces.



## 5. Position buttons or buckles

Position buttons or buckles on wrap overlay according to size and preference.



## 6. Print out pattern pieces

Position and save pattern pieces and print out without lining.

### **Copy edge facing**

Pin film or tissue paper onto the front section and copy the marking lines for the front edge facing.

### **Adding or removing seam allowances:**

- On front edge of waist facing > add 1.6cm seam allowance
- On edge of front section > add 1.6cm seam allowance
- On both long sides of front edge facing > add 1.6cm seam allowance
- Back facing (centre-back to fabric fold) > remove seam allowance
- Since the back is laid out to the fabric fold, the seam- and slit allowance in the centre-back can be cut off (see pattern-layout illustration, next page).
- Add missing grains.

### **Cut out pattern pieces**






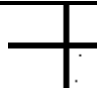
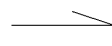
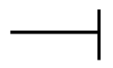
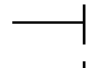
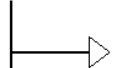


### **Pattern check**

Check that the cut-out pieces match. Add additional cross markings if necessary.

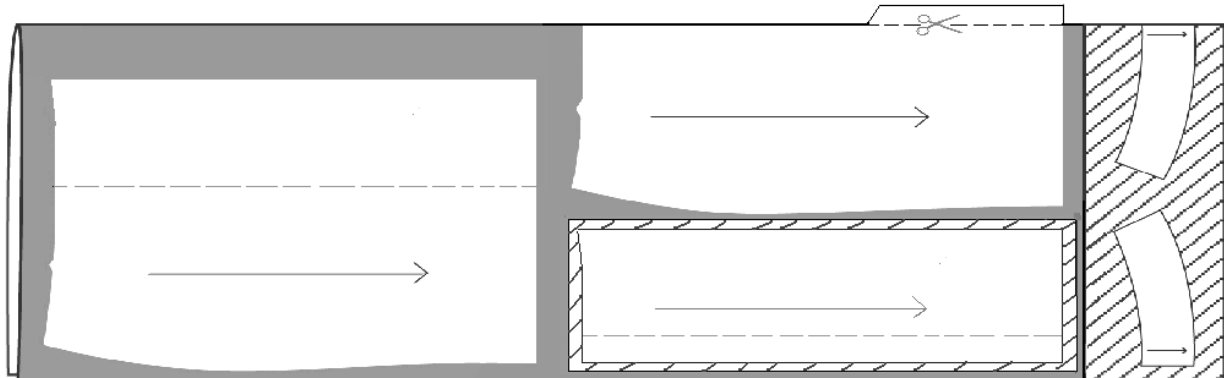
My Label<sup>TM</sup>

3D FASHION PATTERN SOFTWARE

## Fabric requirement

Fabric Key				
				
Fabric, right side	Fabric, wrong side	Lining, right side	Lining, wrong side	Interfacing
Symbols and Markings Key				
<b>CF</b> Centre Front	<b>CB</b> Centre Back	<b>B9</b> Sheet numbering	 Reference points – help in combining the individual sheets	 Grain
 Marking points on front sections	 Marking points on back sections	 Pleating in direction of arrow	 Marking of dart ends (1cm before the dart tip in each case)	 Button marking

Fabric requirement: approx. 114cm to fabric fold (may vary according to size).



## Materials and miscellaneous

- About 3 buckle fastenings
- Button or hook-and-eyelet closure
- Interfacing for facings
- Stay tape for waist, if wished

## Cutting out

<b>Outer fabric</b> <ul style="list-style-type: none"> <li>• 2 x front</li> <li>• 1 x back to fabric fold (slit left off)</li> <li>• 2 x front edge facing</li> <li>• 2 x front waist facing</li> <li>• 1 x back waist facing to fabric fold</li> </ul>	<b>Interfacing</b> <ul style="list-style-type: none"> <li>• 2 x front edge facing</li> <li>• 2 x front waist facing</li> <li>• 1 x back waist facing to fabric fold</li> </ul>
---	--

## Preparation

Lay out paper pattern pieces on fabric according to pattern-layout illustration. Cut out pieces and transfer all markings to the fabric.

Iron interfacing to wrong side of fabric of front edge facing and waist facings.

## Sewing instructions

*All seam allowances are 1.6cm unless otherwise indicated.*

### Darts

Close darts on front and back sections.  
Iron darts towards the centre in each case.

### Close side seams

With right sides facing, sew skirt sections together along side seams.  
Press seam allowances apart; neaten.

### Sew on front edge facings

With right sides together, sew edge facings to the edges of the front sections.  
Neaten edge.

### Stitch together waist facings

With right sides together, sew waist facings together along the side seams.  
Press seam allowances apart and neaten along both short sides and the bottom edge.  
Press.

### Neaten hem edge

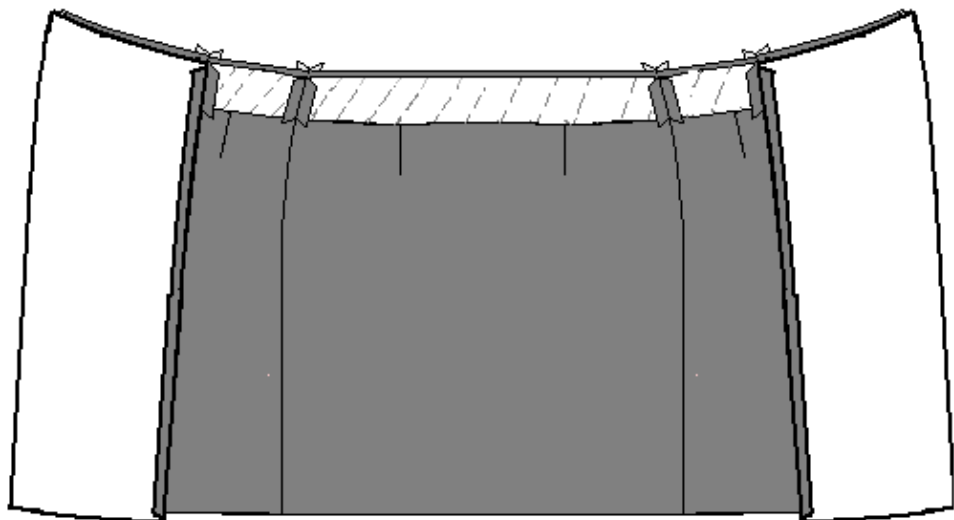
#### Stitch waist facing to skirt section

With right sides together, stitch short sides of waist facing to edge facings of front section. Iron apart and neaten.

Turn under seam allowances of front-section facing along both long edges and edgestitch.

With right sides facing, stitch together top waist edge and turn, then iron seam allowance towards facing. Edgestitch waistband edge to seam allowance.  
Secure waist facing in side seams and darts.

► **Tip:** Catch the stay tape to give the waist edge greater sturdiness.



### **Sew hem**

With right sides together, stitch together facing and hem edge and turn. Turn under hem edge and sew on by hand.

### **Attach buckle closures**

Attach buckle closures, or alternatively buttons and buttonholes, according to the markings on the front sections. Hold inside front section in place with a hook-and-eyelet closure.

**N.B.:** For the closure underlap, stabiliser must be sewn in for reinforcement on the appropriate skirt section. This will prevent the closure from tearing.



My Label<sup>TM</sup>

3D FASHION PATTERN SOFTWARE