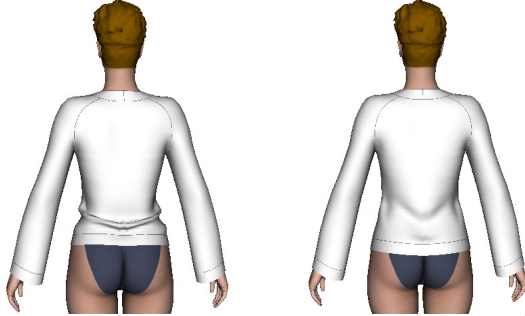


My Label Tips and Tricks

Pullover

Style Properties / Optimising Fit

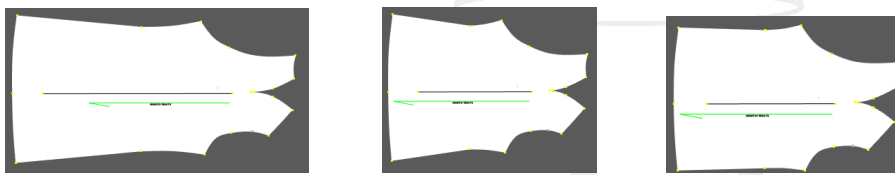
For models with somewhat wider hips, we recommend increasing the hip measurement in the Style Properties, since the pullover might otherwise run up against the hips and form an unsightly fold at the back.



For models with a very slender waist, you may wish to increase the waist measurement in the Style Properties in order to achieve a more attractive side-seam line.

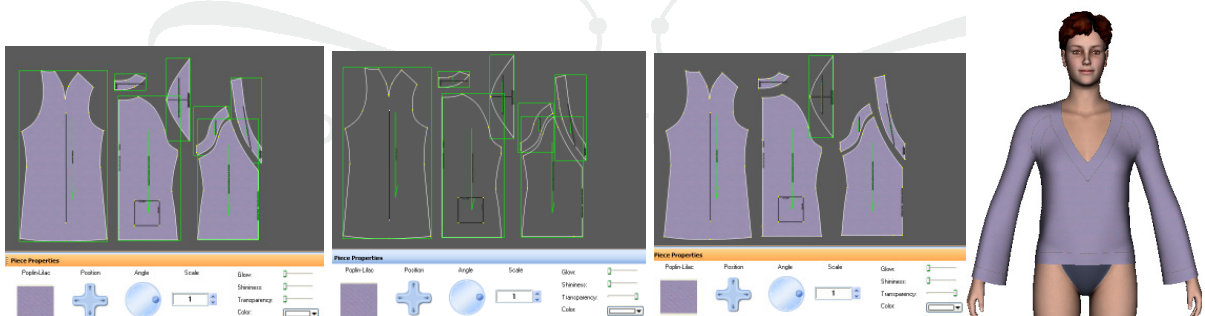


If the sleeve is being shortened to $\frac{3}{4}$ length, the elbow measurement may be increased in the Style Properties, if wished. At the same time, reduce the wrist measurement to the minimum in order to retain a slim sleeve shape.

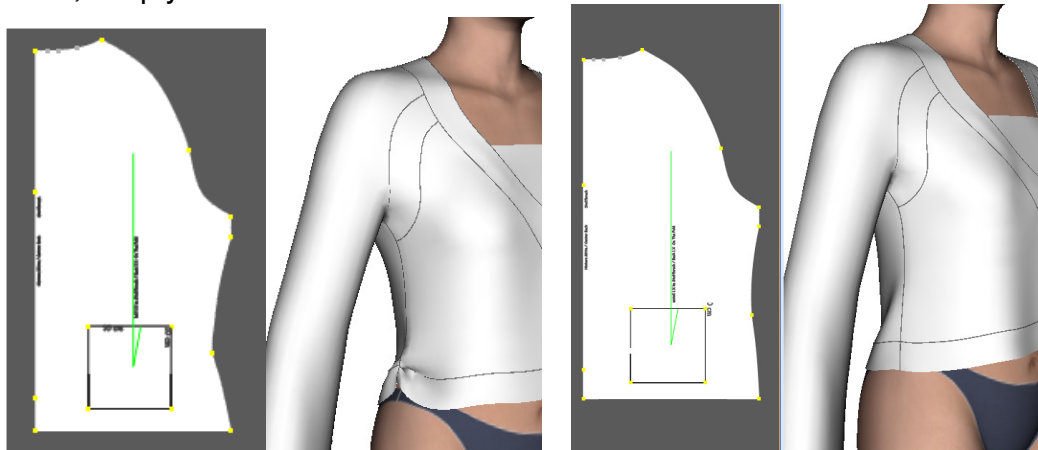


Simulation

For technical reasons, if you wish to simulate this pullover without an insert in the neckline, you must first 'place' fabric on all of the pieces on the work table and set these pieces to transparent in Pattern-Piece Properties. Next, cancel the transparency piece by piece, then simulate.



Depending on the waist-to-hip ratio, significantly shortening the pullover in the Style Properties may create an unattractive simulation in the side hem area. If this is the case, simply increase the waist measurement.



Possible variations

- Use different materials and fabric patterns.
- Construct the pullover without yokes. To do this, glue the yokes to the front section before cutting out.
- Construct seams with decorative welting.
- If the pullover is being extended into a dress, the hip measurement **must** be increased.

Sewing tools

Use the Bernina Edgestitch foot no. 10 for topstitching the inserts and sleeves.

Use an elastic bobbin thread to prevent thread breakage in the various places where there is decorative straightstitching. Note – you may need to reduce the bobbin tension slightly here.

A slightly more professional look can be achieved by counterstitching the seams with a coverstitch machine.

Use the Bernina walking foot no. 50 to prevent fabric layers from shifting in the case of very thick or smooth materials.

My LabelTM



3D FASHION PATTERN SOFTWARE