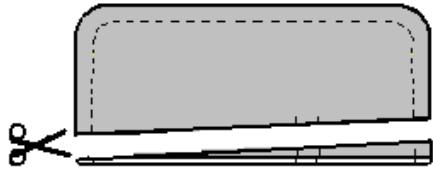


## Yoked Jacket

### False pockets

The pocket bag is not required here.

Stitch the flap pockets and turn as per the instructions. Adjust the seam allowance of the lower side of the flap to the depth of the dart and slide into the dart according to the markings for the pocket opening. Stitch the dart and press to the side seam. Topstitch the dart.

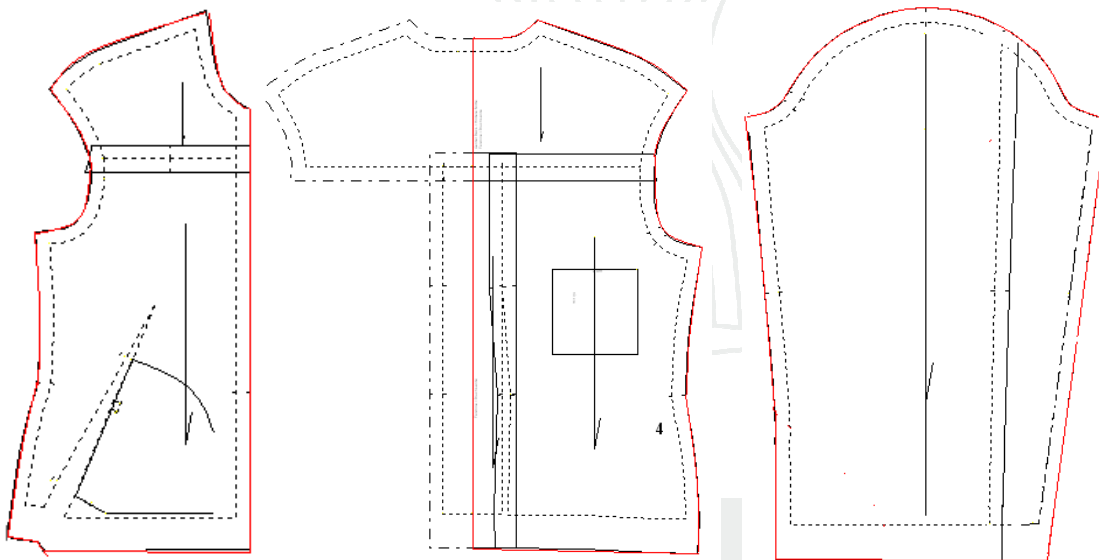


### Decoration

The jacket can be decorated with studs, rhinestones, embroidery, pintucks and other elements. Topstitch with a double needle to create professional-looking decorative seams. Double needles can be purchased in a range of widths at all Bernina shops.

### Jacket lining

It is very easy to use the original pattern pieces to make a jacket lining. The closure for the flap sections, the collar and the pocket bag are not required here.



Neaten the seam allowances with bias binding as an alternative to lining.

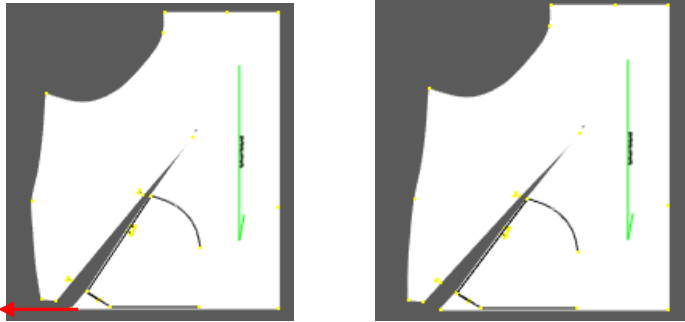
### Shoulder yoke

If the shoulder yoke is too narrow, increase the across-shoulder width and the back width by 1-2cm in the Style Properties.

## Adapting the pattern for high waist

If the front and back pattern pieces 'billow' out at waist height, the pattern can be adapted using the Style Properties.

- Increase at the hips accordingly.
- Reduce at the waist slightly.



## Adapting the pattern for large bust or stomach girth

If the jacket is too short at the front due to a large bust or stomach girth, the jacket must be lengthened by hand.

In this case, add 1.5 to 2cm at the front hem and the button plackets, tapering towards the side seam and the back.

## Folds in back piece

If folds form at the sides of the back when 'trying out' the jacket, the jacket is too tight at the hips.

- Adapt the hips in the Style Properties accordingly (increase the hip value).

## Sewing on buttons

Buttons can be easily attached using the Bernina button sew-on foot no. 18.

Press studs can be used instead of buttons.

## Visible button closure

If a hidden closure is not desired, the pattern piece for the button placket is not used. In this case, sew the buttonholes in the flap closure.

Suggestion for those with more experience of sewing: sew bound buttonholes in the flap closure.

## Widening the shoulder

If the shoulder is widened in the Style Properties, it might also be necessary to adjust the shoulder curve by hand.